



Postal Address:
 Suite 2002a, Level 20
 44 Market Street
 Sydney, New South Wales 2000
 Australia

Testing. Advising. Assuring.

| | | |
|---------------------------------------|--------------------------------------|--------------------|
| EWFA CERTIFICATE OF ASSESSMENT | CERTIFICATE No : SFC 21553-12 | Page 1 of 3 |
|---------------------------------------|--------------------------------------|--------------------|

| Report Sponsor | Certificate Issue Date | Product Name |
|---|------------------------|--------------------------------|
| Coopers Fire Pty Ltd 21B, 1-3 Endeavour Road Caringbah, NSW, 2229 | 27/10/2014 | FireMaster Fire Curtain |

| Assessment Report Reference | Test Methods | Report Issue Date | Report Validity Date |
|-----------------------------|---------------|-------------------|----------------------|
| EWFA 21553-12 | AS1530.4-2005 | 27/10/2014 | 30/09/2019 |

Introduction

The element of construction described below was assessed by this laboratory on behalf of the report sponsor in accordance with the stated test standard and achieved the results stated below. Refer to the referenced test report(s) or Regulatory Information Reports for more information.

Description of Assessed Products

The test specimen is a vertically oriented EFP4/1000 FireMaster fire curtain coated with or without silicone coating (depends on designs) tested in accordance with AS1530.4-2005 and assessed in accordance with AS1905.2-2005. For a detailed description of assessed construction refer to referenced report.

Performance of Assessed Products

Single Barrel Designs

| EFP4/1000 FireMaster fire curtain or EFP4/1000 FireMaster fire curtain + silicone coating | | | | |
|---|-------------------|---------------------|-------------|----------------------|
| Max Opening Height | Max Opening Width | Splice Detail | Integrity | Radiation |
| 9m | 30m | Refer to Table 2(a) | 120 minutes | Refer to table below |
| 6m | 30m | Refer to Table 2(b) | 240 minutes | Refer to table below |

Refer to the referenced assessment report(s) or Regulatory Information Report(s) for a complete description of the assessed construction including radiation performance.

- Conditions/Validity**
- THIS CERTIFICATE IS PROVIDED FOR GENERAL INFORMATION ONLY AND DOES NOT COMPLY WITH THE REGULATORY REQUIREMENTS FOR EVIDENCE OF COMPLIANCE.
 - Reference should be made to the relevant test report or regulatory information report to determine the applicability of the test result to a proposed installation. Full details of the constructions and justification for the conclusions given, along with the validity statements, are given in the assessment reports.
 - The results of these fire tests may be used to assess fire hazard, but it should be recognized that a single test method will not provide a full assessment of fire hazard under all conditions.

| | | |
|--------------------------|---|----------------------------------|
| TESTING AUTHORITY | Exova Warringtonfire Aus Pty Ltd | |
| Address | Suite 2002a, Level 20, 44 Market Street, Sydney NSW 2000, Australia | |
| Phone / Fax | +61 (0)2 8270 7600 / +61 (0)2 9299 6076 | |
| ABN | 81 050 241 524 | |
| Email / Home Page | www.exova.com | |
| Authorisation | Prepared By: K. G. Nicholls | Reviewed By: D. Nicholson |

Performance of Assessed Products (Continued)

Table 2(a) – Splice Detail up to 120 minutes

| Max Opening Width (m) | Number of Splices Required | Parameter X from Figure 17 (mm) |
|-----------------------|----------------------------|---------------------------------|
| 3 | None | N/A |
| 4 | None | N/A |
| 5 | None | N/A |
| 7 | 1 | 17 |
| 9 | 1 | 47 |
| 12 | 2 | 46 |
| 18 | 2 | 90 |
| 24 | 3 | 90 |
| 30 | 4 | 90 |

Table 2(b) – Splice Detail up to 240 minutes

| Max Opening Width (m) | Number of Splices Required | Parameter X from Figure 17 (mm) |
|-----------------------|----------------------------|---------------------------------|
| 3 | None | N/A |
| 4 | None | N/A |
| 5 | None | N/A |
| 7 | 1 | 15 |
| 9 | 1 | 48 |
| 12 | 2 | 65 |
| 18 | 3 | 58 |
| 24 | 4 | 80 |
| 30 | 5 | 84 |

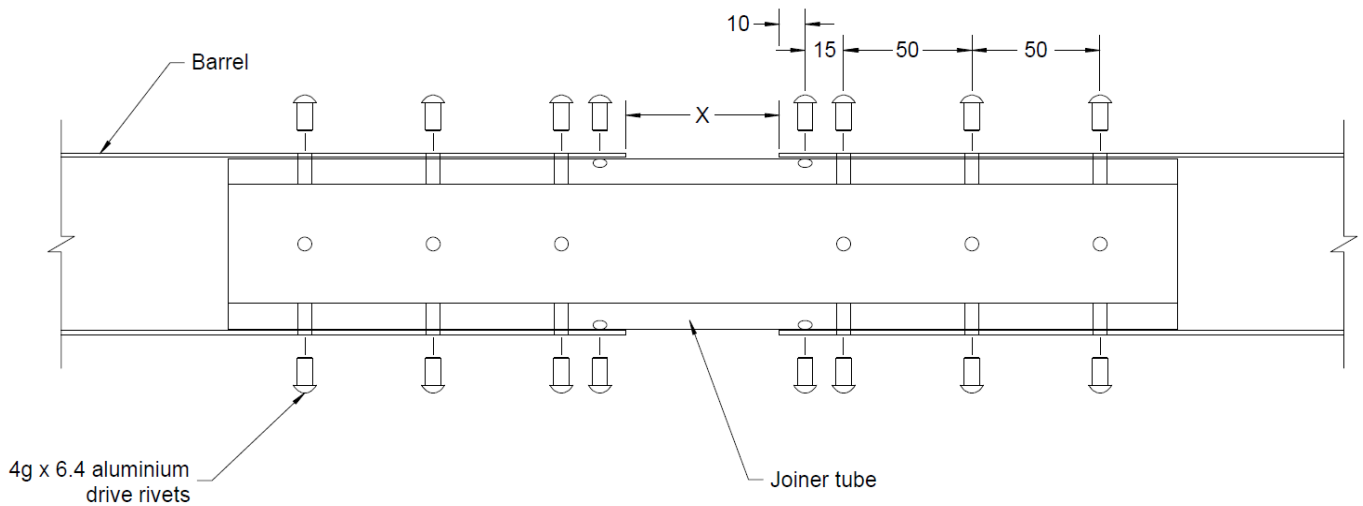


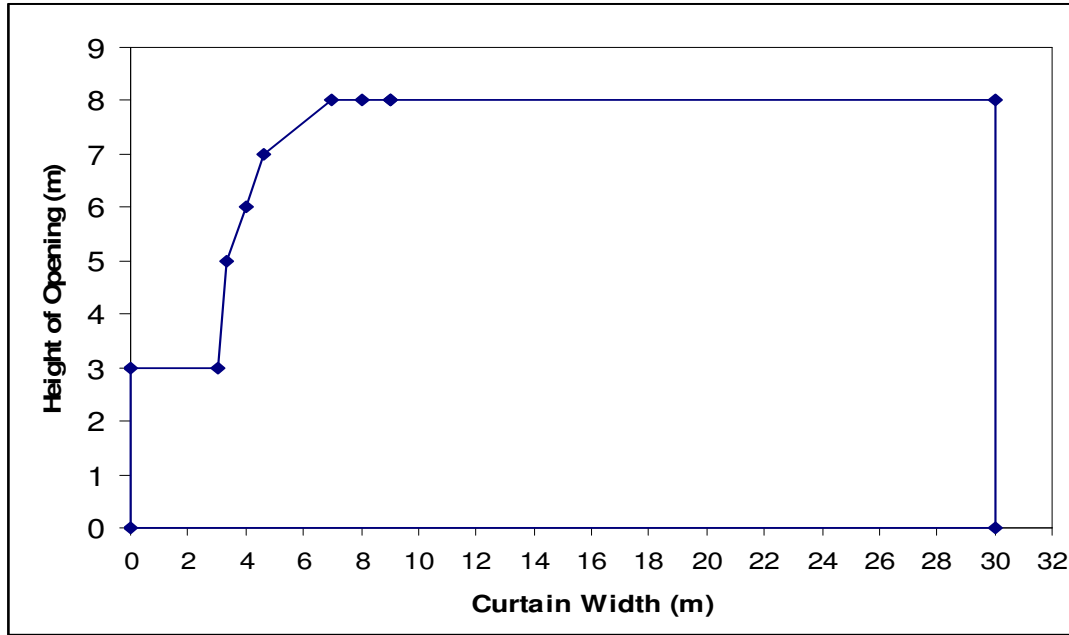
Figure 17 – Splice Detail

Performance of Assessed Products (Continued)

Multiple Barrel Designs

| EFP4/1000 FireMaster fire curtain | | | | |
|-----------------------------------|-----------------------|-------------------------|-------------|----------------------|
| Max Opening Height | Max Opening Width | Minimum Curtain Overlap | Integrity | Radiation |
| 9m | Refer to figure below | 600mm | 120 minutes | Refer to table below |
| 6m | Refer to figure below | 700mm | 240 minutes | Refer to table below |

Region of Applicability of Double Barrel Curtains



Radiation Performance of FireMaster Fabric up to 120 minutes

| Time (mins) | I _o (kW/m ²) |
|-------------|-------------------------------------|
| 0 | 0.00 |
| 15 | 16.32 |
| 30 | 23.12 |
| 45 | 28.56 |
| 60 | 32.64 |
| 75 | 38.08 |
| 90 | 42.17 |
| 105 | 44.89 |
| 120 | 48.97 |

Refer to the referenced assessment report(s) or Regulatory Information Report(s) for a complete description of the assessed construction including radiation performance.